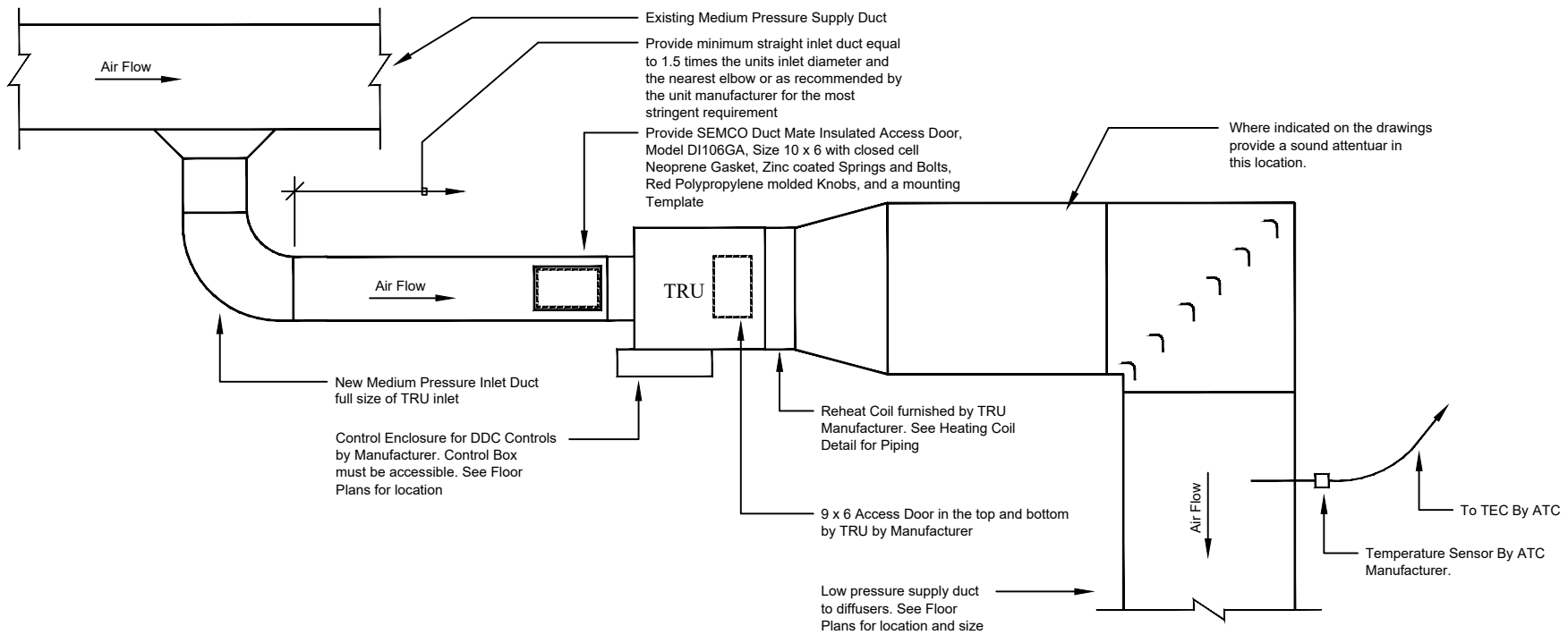


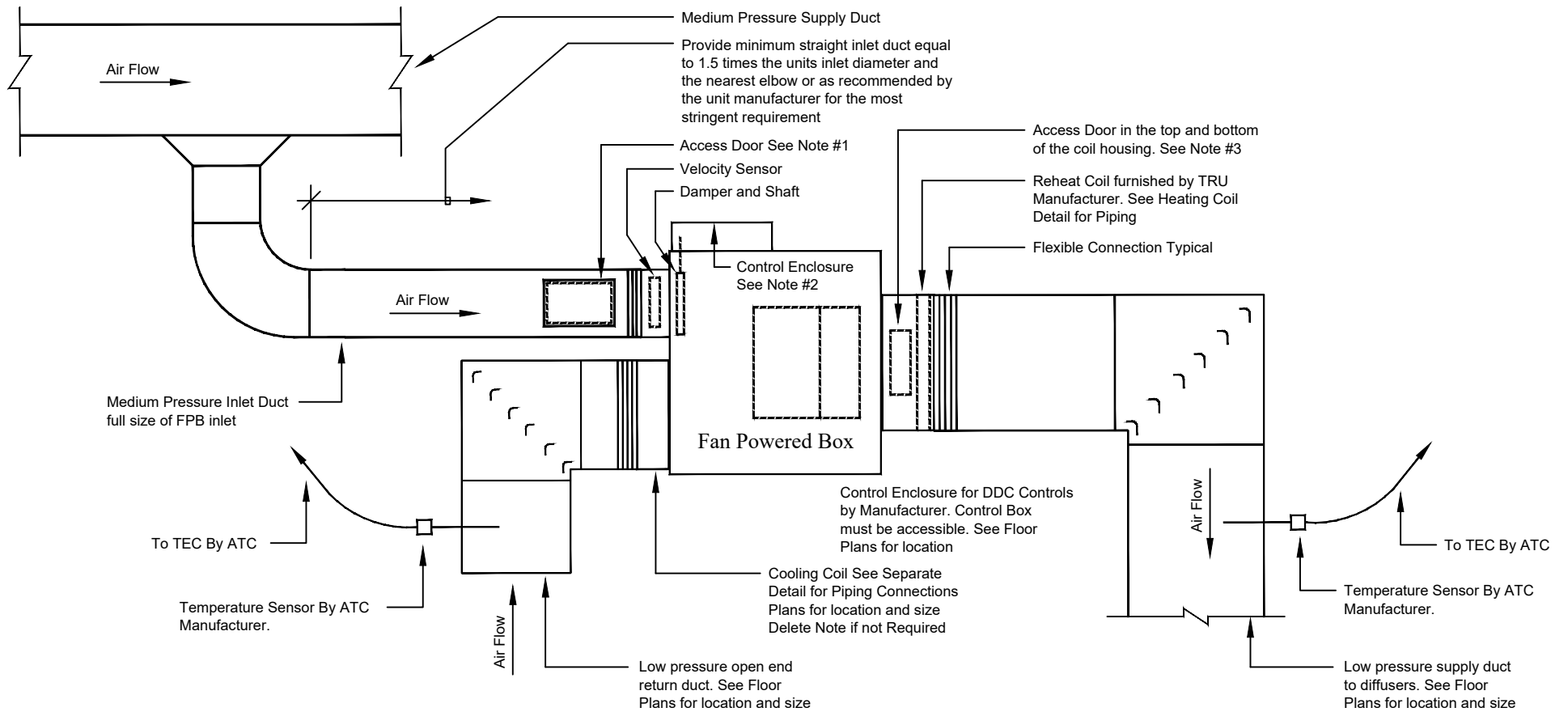
Detail : Terminal Reheat Unit - Ductwork

No Scale



Detail : Terminal Reheat Unit - Ductwork w/ Access Door

No Scale



Detail : Fan Powered Box - Ductwork w/ Access Door

No Scale

NOTES:

1. Provide SEMCO Duct Mate insulated Access Door, Model DI 106GA Size 10" x 6" with closed cell Neoprene Gasket, Zinc coated Springs and Bolts, Red Polypropylene Molded Knobs, and a mounting Template.
2. Control Enclosure for DDC Controls by Manufacturer. Control Enclosure must be accessible See Floor Plans for locations.
3. Minimum Access Door Size is 12 x 6. Size may vary per manufacturer.